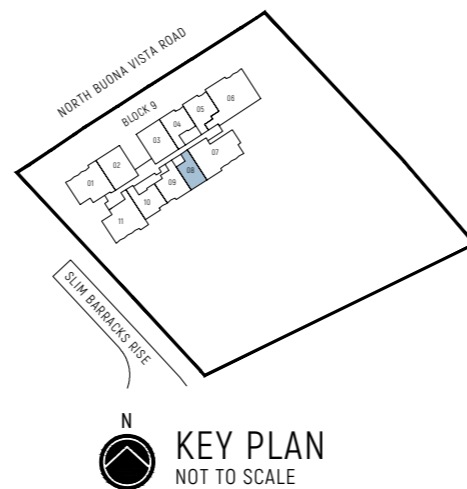
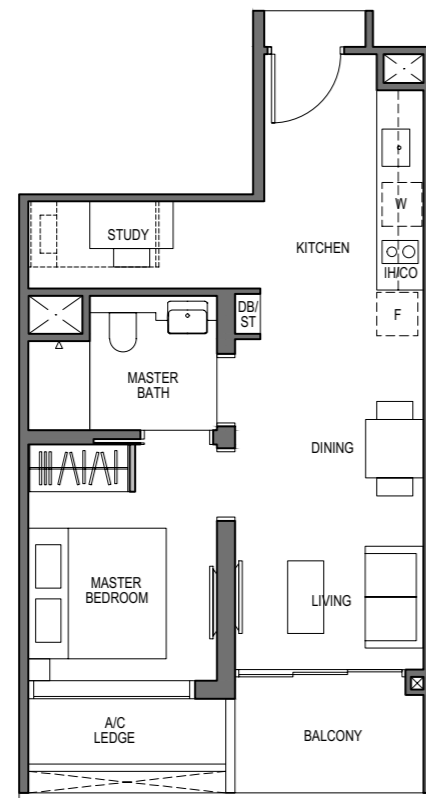


# 1 - BEDROOM + STUDY

**TYPE A1**  
51 sq m / 549 sq ft

BLOCK 9  
UNIT  
#03-08 TO #26-08



0 1 3 5M

**LEGEND (where applicable):**

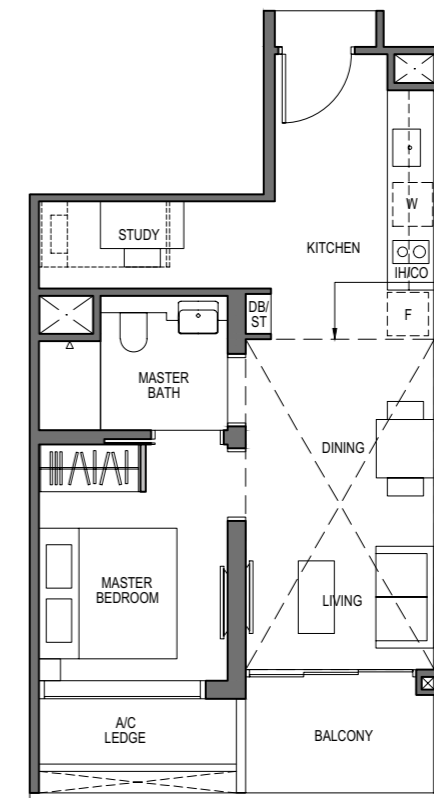
- Non-Structural Wall
- Structural Wall (no hacking allowed)
- ⊠ Services Void Space (excluded from strata area)
- \* - Mirror Image
- F - Fridge
- IH - Induction Hob
- ST - Storage
- W - Washer
- GH - Gas Hob
- DB - Distribution Board
- HS - Household Shelter
- CO - Convection Oven
- WC - Water Closet

The balcony shall not be enclosed. Only approved balcony screens are to be used. For illustration of the approved balcony screen, please refer to diagram annexed hereto as "Annexure A". All plans are subjected to amendments as may be approved by the relevant authorities. Floor areas are approximate measurements and are subjected to final survey. All RC Ledge (Reinforced Concrete Ledge) are excluded from strata area. BP Approval No. A1720-00020-2021-BP02 dated 17/03/2023

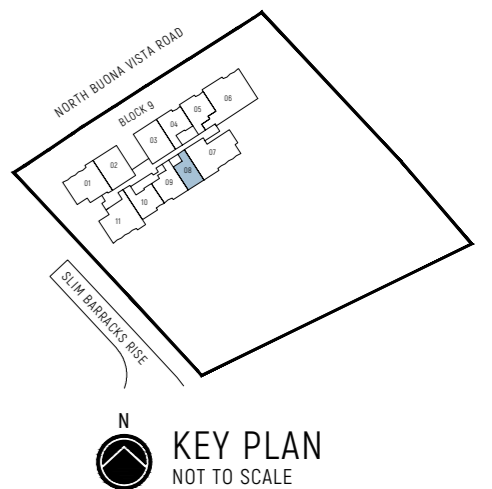
# 1 - BEDROOM + STUDY

**TYPE A1-PH**  
64 sq m / 689 sq ft  
[inclusive of 13 sq m / 140 sq ft of void area (high ceiling)]

BLOCK 9  
UNIT  
#27-08



Dotted Line denotes Strata Void Area for Type A1-PH which is part of the Strata Void



0 1 3 5M

**LEGEND (where applicable):**

- Non-Structural Wall
- Structural Wall (no hacking allowed)
- ⊠ Services Void Space (excluded from strata area)
- \* - Mirror Image
- F - Fridge
- IH - Induction Hob
- ST - Storage
- W - Washer
- GH - Gas Hob
- DB - Distribution Board
- HS - Household Shelter
- CO - Convection Oven
- WC - Water Closet

The balcony shall not be enclosed. Only approved balcony screens are to be used. For illustration of the approved balcony screen, please refer to diagram annexed hereto as "Annexure A". All plans are subjected to amendments as may be approved by the relevant authorities. Floor areas are approximate measurements and are subjected to final survey. All RC Ledge (Reinforced Concrete Ledge) are excluded from strata area. BP Approval No. A1720-00020-2021-BP02 dated 17/03/2023

## 2 - BEDROOM

### TYPE B1

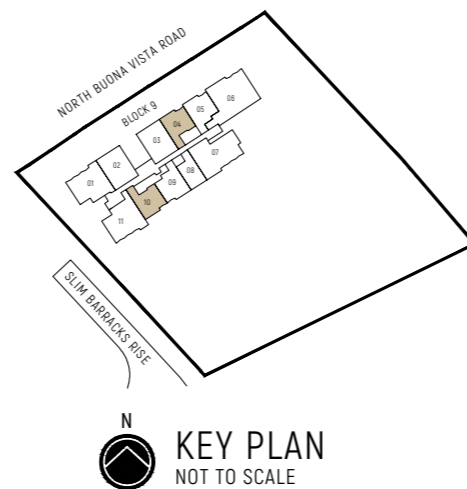
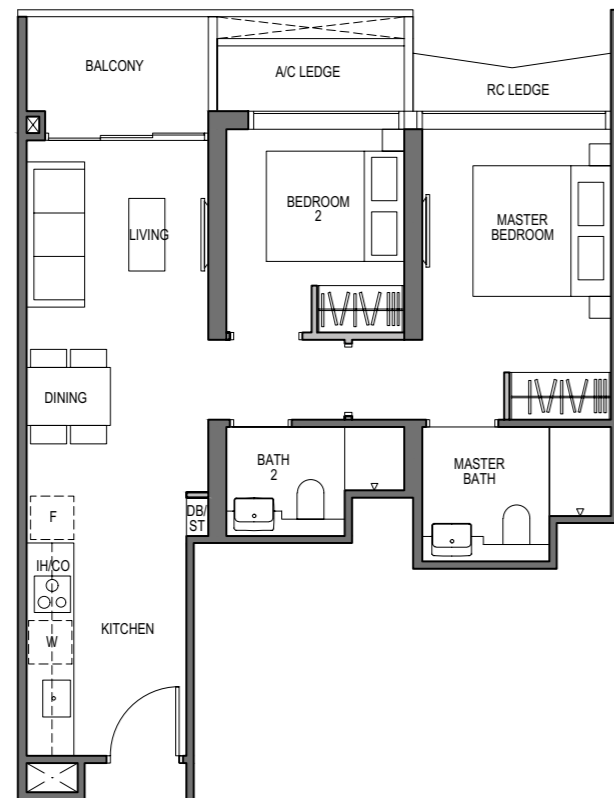
63 sq m / 678 sq ft

BLOCK 9

UNIT

#03-04 TO #26-04

#03-10\* TO #26-10\*



0 1 3 5M

**LEGEND (where applicable):**

- Non-Structural Wall
- Structural Wall (no hacking allowed)
- Services Void Space (excluded from strata area)
- F - Fridge
- IH - Induction Hob
- ST - Storage
- W - Washer
- GH - Gas Hob
- DB - Distribution Board
- HS - Household Shelter
- CO - Convection Oven
- WC - Water Closet

\* - Mirror Image

The balcony shall not be enclosed. Only approved balcony screens are to be used. For illustration of the approved balcony screen, please refer to diagram annexed hereto as "Annexure A". All plans are subjected to amendments as may be approved by the relevant authorities. Floor areas are approximate measurements and are subjected to final survey. All RC Ledge (Reinforced Concrete Ledge) are excluded from strata area. BP Approval No. A1720-00020-2021-BP02 dated 17/03/2023

## 2 - BEDROOM

### TYPE B1-PH

77 sq m / 829 sq ft

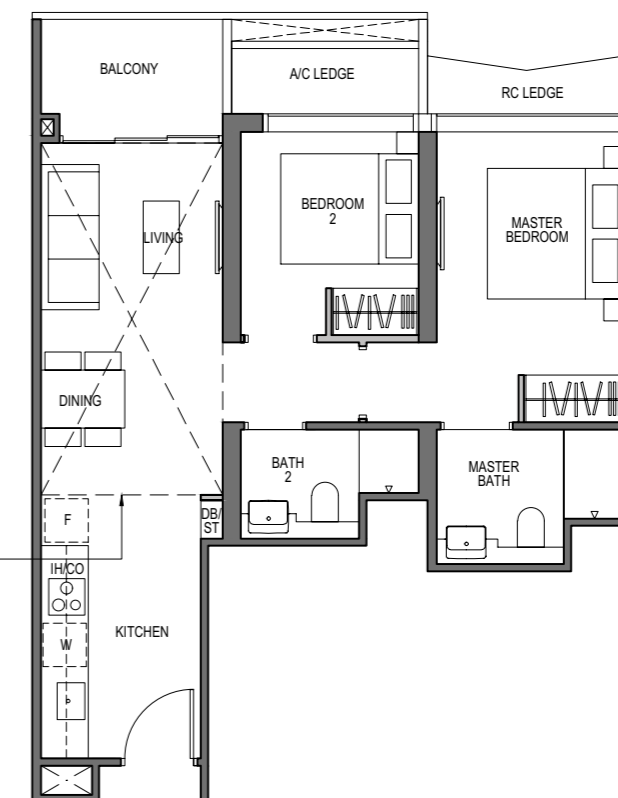
[inclusive of 14 sq m / 151 sq ft of void area (high ceiling)]

BLOCK 9

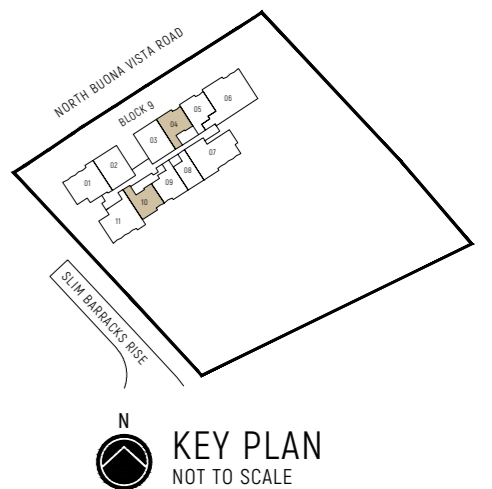
UNIT

#27-04

#27-10\*



Dotted Line denotes Strata Void Area for Type B1-PH which is part of the Strata Void



0 1 3 5M

**LEGEND (where applicable):**

- Non-Structural Wall
- Structural Wall (no hacking allowed)
- Services Void Space (excluded from strata area)
- F - Fridge
- IH - Induction Hob
- ST - Storage
- W - Washer
- GH - Gas Hob
- DB - Distribution Board
- HS - Household Shelter
- CO - Convection Oven
- WC - Water Closet

\* - Mirror Image

The balcony shall not be enclosed. Only approved balcony screens are to be used. For illustration of the approved balcony screen, please refer to diagram annexed hereto as "Annexure A". All plans are subjected to amendments as may be approved by the relevant authorities. Floor areas are approximate measurements and are subjected to final survey. All RC Ledge (Reinforced Concrete Ledge) are excluded from strata area. BP Approval No. A1720-00020-2021-BP02 dated 17/03/2023

## 2 - BEDROOM + STUDY

### TYPE B2

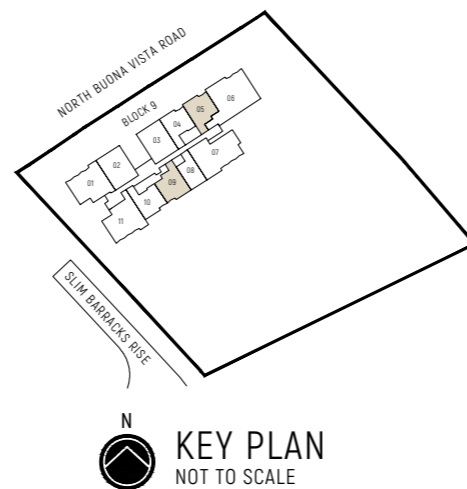
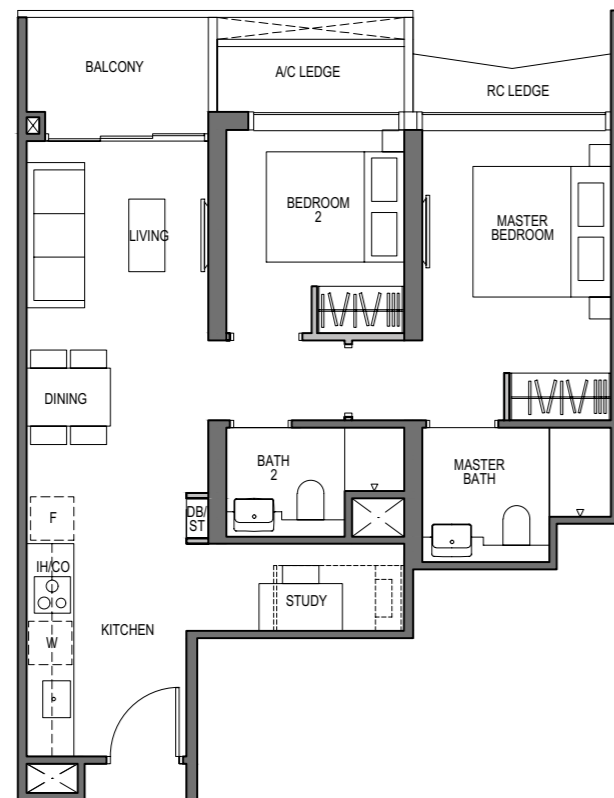
67 sq m / 721 sq ft

BLOCK 9

UNIT

#03-05 TO #26-05

#03-09 TO #26-09



0 1 3 5M

**LEGEND (where applicable):**

- Non-Structural Wall
- Structural Wall (no hacking allowed)
- ⊠ Services Void Space (excluded from strata area)
- \* - Mirror Image
- F - Fridge
- IH - Induction Hob
- GH - Gas Hob
- CO - Convection Oven
- W - Washer
- HS - Household Shelter
- ST - Storage
- DB - Distribution Board
- WC - Water Closet

The balcony shall not be enclosed. Only approved balcony screens are to be used. For illustration of the approved balcony screen, please refer to diagram annexed hereto as "Annexure A". All plans are subjected to amendments as may be approved by the relevant authorities. Floor areas are approximate measurements and are subjected to final survey. All RC Ledge (Reinforced Concrete Ledge) are excluded from strata area. BP Approval No. A1720-00020-2021-BP02 dated 17/03/2023

## 2 - BEDROOM + STUDY

### TYPE B2-PH

81 sq m / 872 sq ft

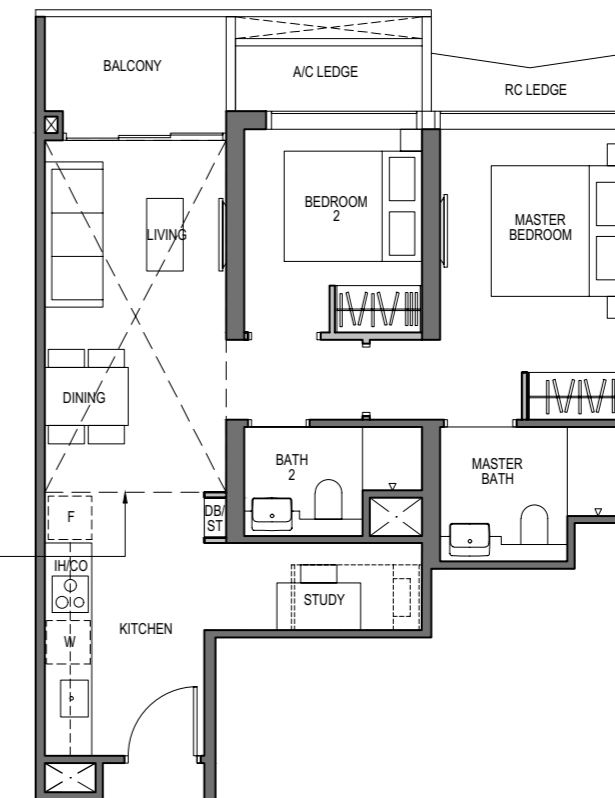
[inclusive of 14 sq m / 151 sq ft of void area (high ceiling)]

BLOCK 9

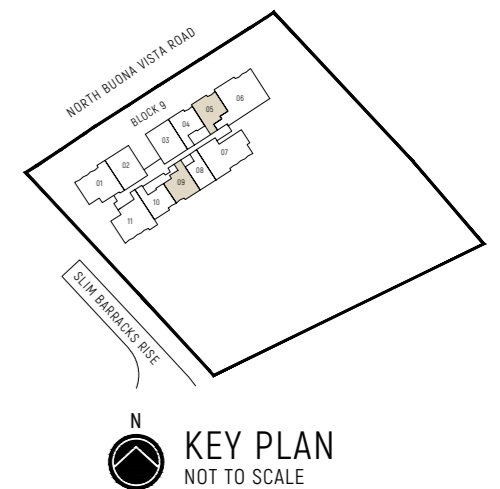
UNIT

#27-05

#27-09



Dotted Line denotes Strata Void Area for Type B2-PH which is part of the Strata Void



0 1 3 5M

**LEGEND (where applicable):**

- Non-Structural Wall
- Structural Wall (no hacking allowed)
- ⊠ Services Void Space (excluded from strata area)
- \* - Mirror Image
- F - Fridge
- IH - Induction Hob
- GH - Gas Hob
- CO - Convection Oven
- W - Washer
- HS - Household Shelter
- ST - Storage
- DB - Distribution Board
- WC - Water Closet

The balcony shall not be enclosed. Only approved balcony screens are to be used. For illustration of the approved balcony screen, please refer to diagram annexed hereto as "Annexure A". All plans are subjected to amendments as may be approved by the relevant authorities. Floor areas are approximate measurements and are subjected to final survey. All RC Ledge (Reinforced Concrete Ledge) are excluded from strata area. BP Approval No. A1720-00020-2021-BP02 dated 17/03/2023

### 3 - BEDROOM

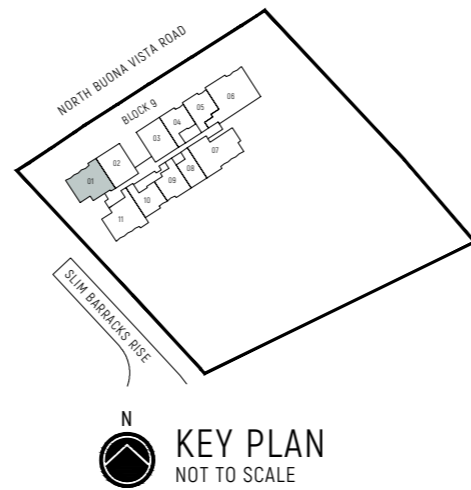
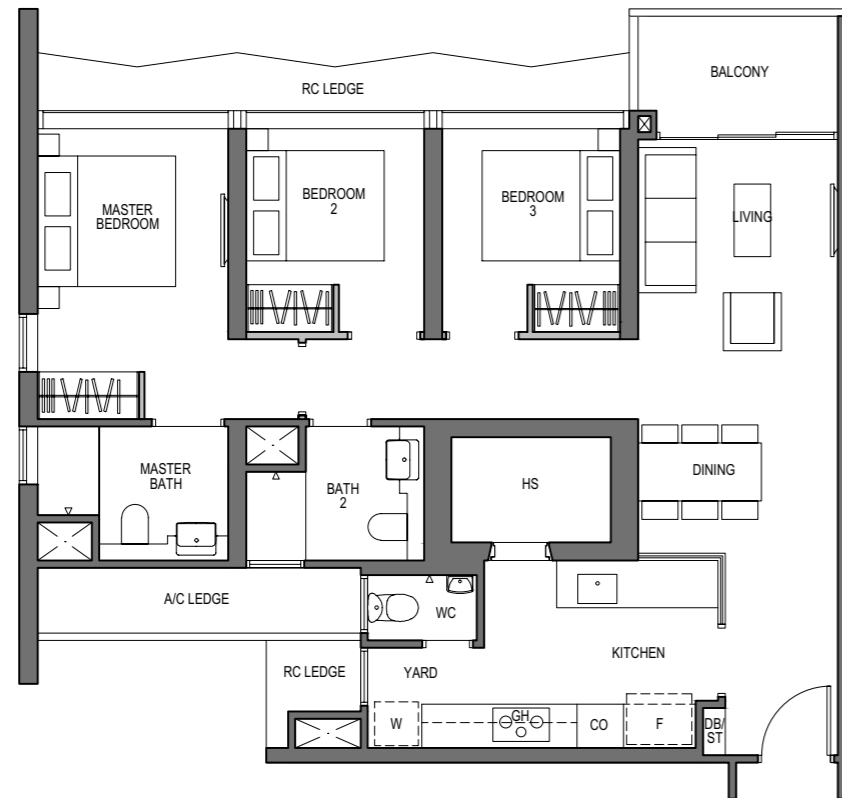
**TYPE C1**

97 sq m / 1044 sq ft

BLOCK 9

UNIT

#03-01 TO #26-01



**LEGEND (where applicable):**

- Non-Structural Wall
- Structural Wall (no hacking allowed)
- Services Void Space (excluded from strata area)
- F - Fridge
- IH - Induction Hob
- GH - Gas Hob
- CO - Convection Oven
- W - Washer
- HS - Household Shelter
- WC - Water Closet
- ST - Storage
- DB - Distribution Board

\* - Mirror Image

The balcony shall not be enclosed. Only approved balcony screens are to be used. For illustration of the approved balcony screen, please refer to diagram annexed hereto as "Annexure A". All plans are subjected to amendments as may be approved by the relevant authorities. Floor areas are approximate measurements and are subjected to final survey. All RC Ledge (Reinforced Concrete Ledge) are excluded from strata area. BP Approval No. A1720-00020-2021-BP02 dated 17/03/2023

### 3 - BEDROOM

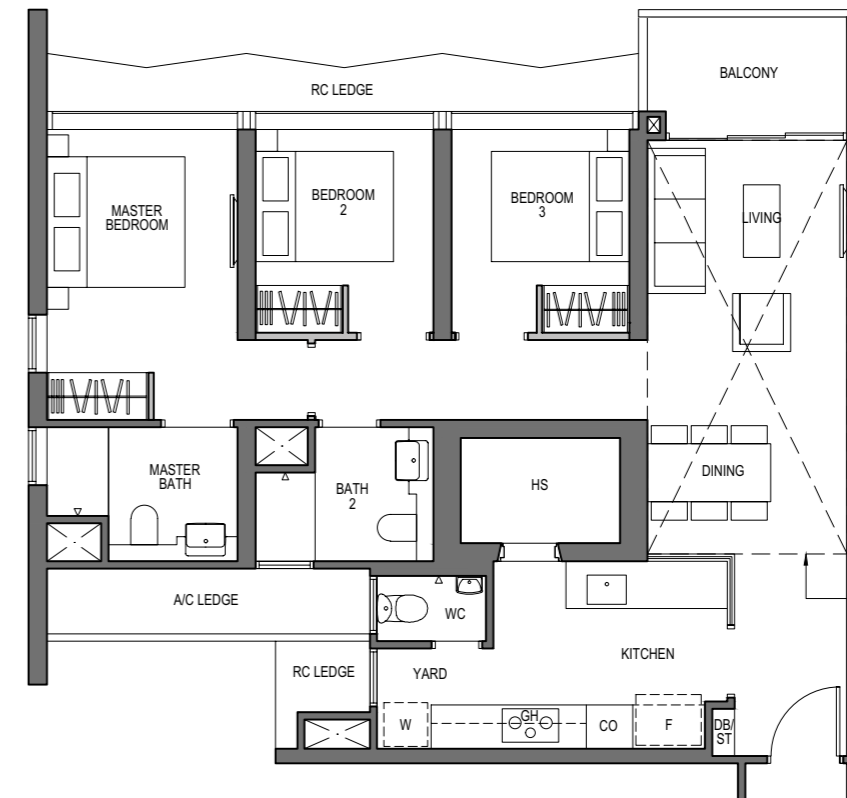
**TYPE C1-PH**

114 sq m / 1227 sq ft  
[inclusive of 17 sq m / 183 sq ft of void area (high ceiling)]

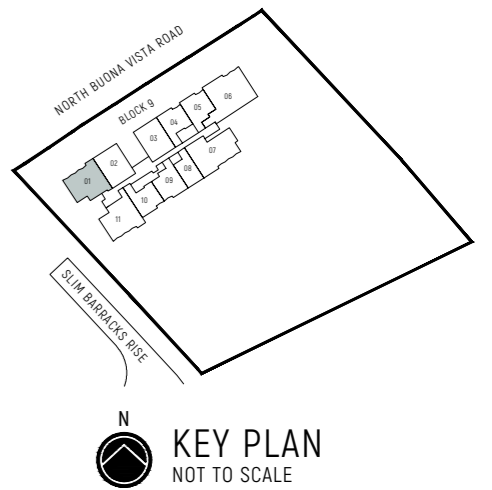
BLOCK 9

UNIT

#27-01



Dotted Line denotes Strata Void Area for Type C1-PH which is part of the Strata Void



**LEGEND (where applicable):**

- Non-Structural Wall
- Structural Wall (no hacking allowed)
- Services Void Space (excluded from strata area)
- F - Fridge
- IH - Induction Hob
- GH - Gas Hob
- CO - Convection Oven
- W - Washer
- HS - Household Shelter
- WC - Water Closet
- ST - Storage
- DB - Distribution Board

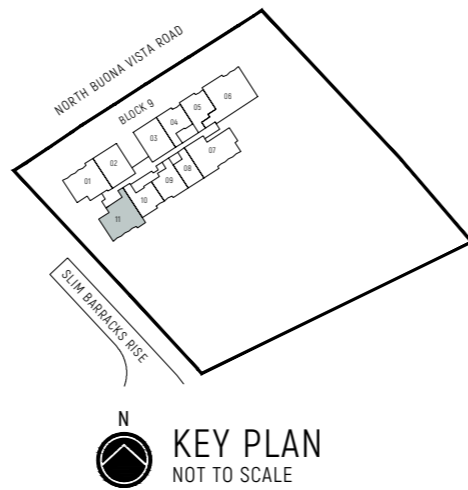
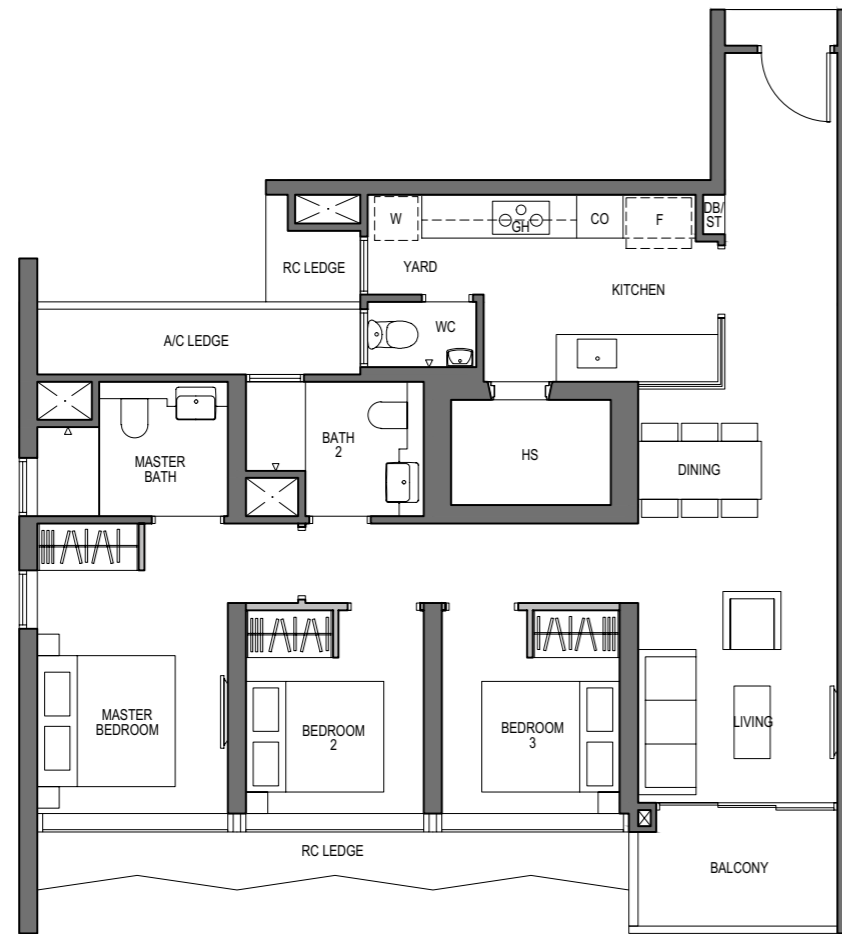
\* - Mirror Image

The balcony shall not be enclosed. Only approved balcony screens are to be used. For illustration of the approved balcony screen, please refer to diagram annexed hereto as "Annexure A". All plans are subjected to amendments as may be approved by the relevant authorities. Floor areas are approximate measurements and are subjected to final survey. All RC Ledge (Reinforced Concrete Ledge) are excluded from strata area. BP Approval No. A1720-00020-2021-BP02 dated 17/03/2023

### 3 - BEDROOM

**TYPE C2**  
100 sq m / 1076 sq ft

BLOCK 9  
UNIT  
#03-11 TO #26-11



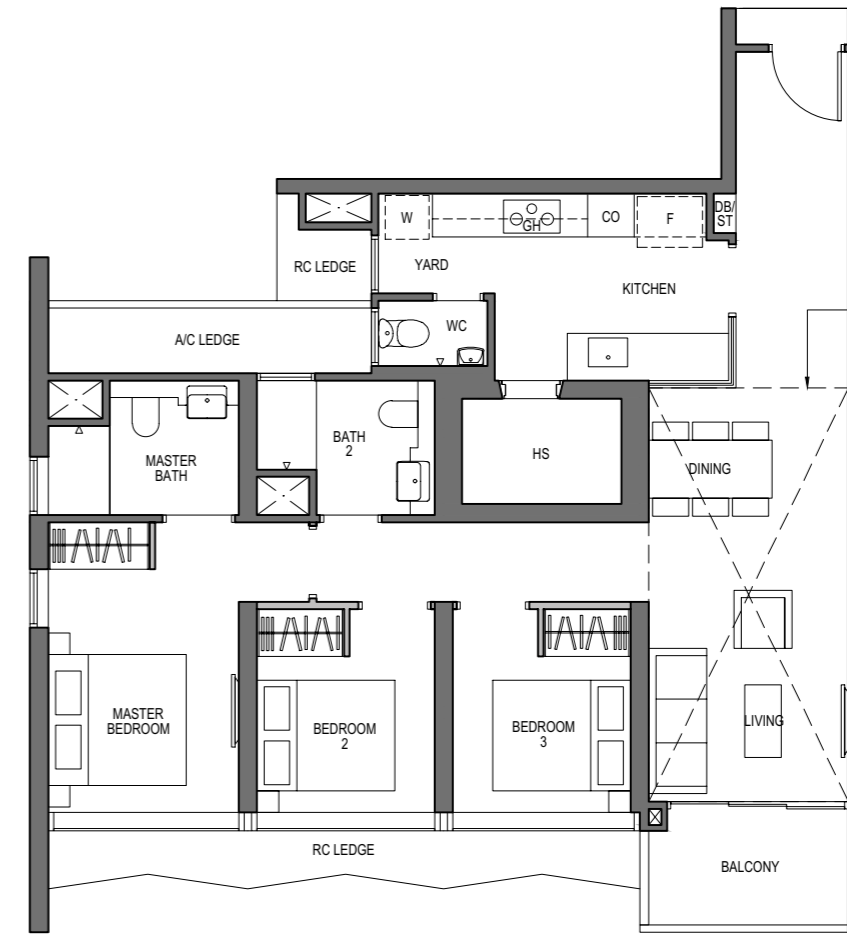
- LEGEND (where applicable):**
- Non-Structural Wall
  - Structural Wall (no hacking allowed)
  - ⊠ Services Void Space (excluded from strata area)
  - \* - Mirror Image
  - F - Fridge
  - IH - Induction Hob
  - ST - Storage
  - W - Washer
  - GH - Gas Hob
  - DB - Distribution Board
  - HS - Household Shelter
  - CO - Convection Oven
  - WC - Water Closet

The balcony shall not be enclosed. Only approved balcony screens are to be used. For illustration of the approved balcony screen, please refer to diagram annexed hereto as "Annexure A". All plans are subjected to amendments as may be approved by the relevant authorities. Floor areas are approximate measurements and are subjected to final survey. All RC Ledge (Reinforced Concrete Ledge) are excluded from strata area. BP Approval No. A1720-00020-2021-BP02 dated 17/03/2023

### 3 - BEDROOM

**TYPE C2-PH**  
117 sq m / 1259 sq ft  
[inclusive of 17 sq m / 183 sq ft of void area (high ceiling)]

BLOCK 9  
UNIT  
#27-11

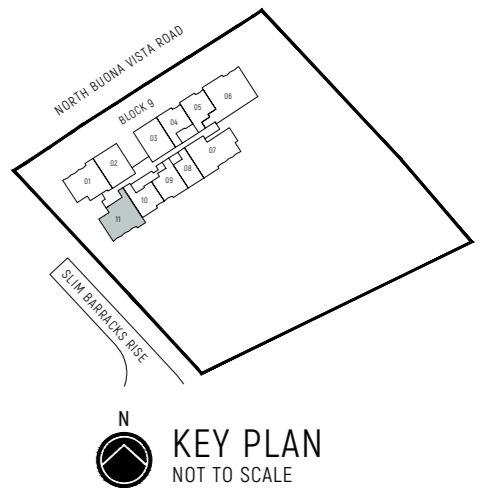


Dotted Line denotes  
Strata Void Area for Type C2-PH  
which is part of the Strata Void



- LEGEND (where applicable):**
- Non-Structural Wall
  - Structural Wall (no hacking allowed)
  - ⊠ Services Void Space (excluded from strata area)
  - \* - Mirror Image
  - F - Fridge
  - IH - Induction Hob
  - ST - Storage
  - W - Washer
  - GH - Gas Hob
  - DB - Distribution Board
  - HS - Household Shelter
  - CO - Convection Oven
  - WC - Water Closet

The balcony shall not be enclosed. Only approved balcony screens are to be used. For illustration of the approved balcony screen, please refer to diagram annexed hereto as "Annexure A". All plans are subjected to amendments as may be approved by the relevant authorities. Floor areas are approximate measurements and are subjected to final survey. All RC Ledge (Reinforced Concrete Ledge) are excluded from strata area. BP Approval No. A1720-00020-2021-BP02 dated 17/03/2023



### 3 - BEDROOM DUAL-KEY

**TYPE C3**

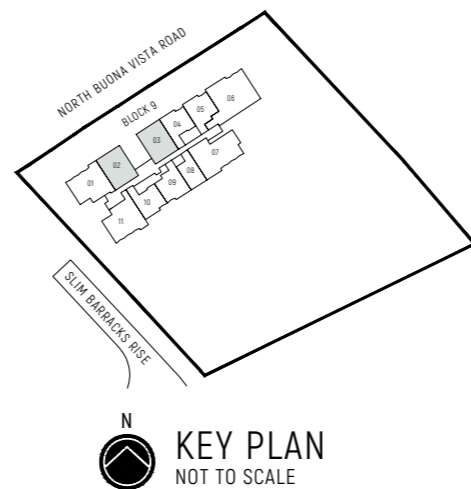
85 sq m / 915 sq ft

BLOCK 9

UNIT

#03-02 TO #26-02

#03-03\* TO #26-03\*



**LEGEND (where applicable):**

- Non-Structural Wall
- Structural Wall (no hacking allowed)
- Services Void Space (excluded from strata area)
- F - Fridge
- IH - Induction Hob
- GH - Gas Hob
- CO - Convection Oven
- W - Washer
- ST - Storage
- DB - Distribution Board
- WC - Water Closet
- HS - Household Shelter

\* - Mirror Image

The balcony shall not be enclosed. Only approved balcony screens are to be used. For illustration of the approved balcony screen, please refer to diagram annexed hereto as "Annexure A". All plans are subjected to amendments as may be approved by the relevant authorities. Floor areas are approximate measurements and are subjected to final survey. All RC Ledge (Reinforced Concrete Ledge) are excluded from strata area. BP Approval No. A1720-00020-2021-BP02 dated 17/03/2023

### 3 - BEDROOM DUAL-KEY

**TYPE C3-PH**

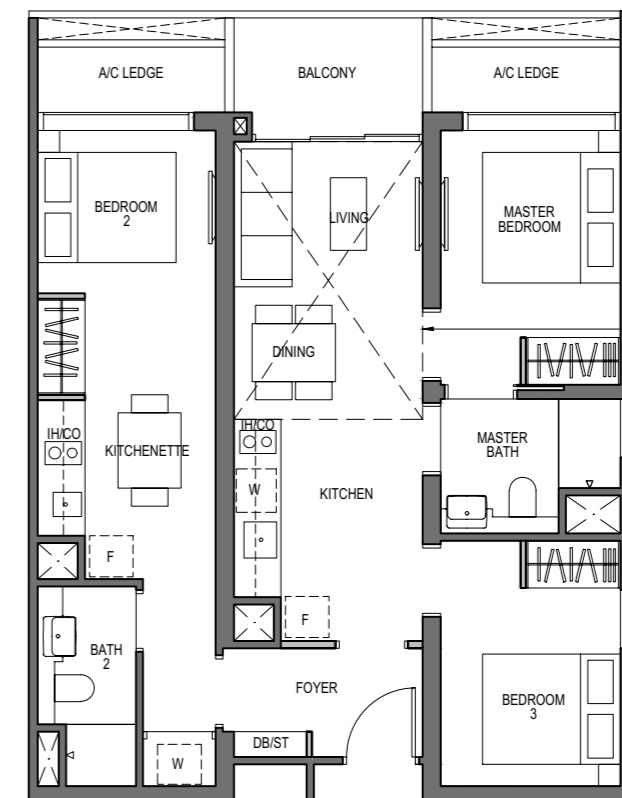
96 sq m / 1033 sq ft  
[inclusive of 11 sq m / 118 sq ft of void area (high ceiling)]

BLOCK 9

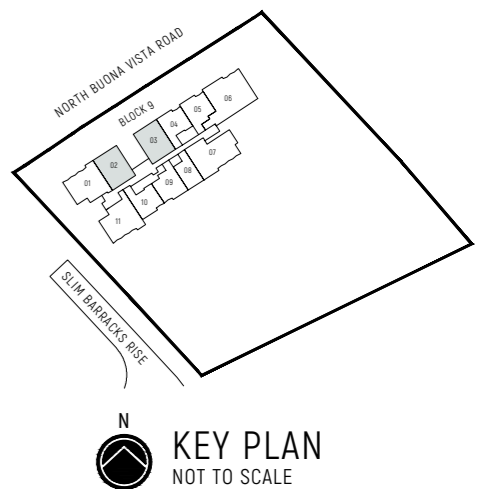
UNIT

#27-02

#27-03\*



Dotted Line denotes Strata Void Area for Type C3-PH which is part of the Strata Void



**LEGEND (where applicable):**

- Non-Structural Wall
- Structural Wall (no hacking allowed)
- Services Void Space (excluded from strata area)
- F - Fridge
- IH - Induction Hob
- GH - Gas Hob
- CO - Convection Oven
- W - Washer
- ST - Storage
- DB - Distribution Board
- WC - Water Closet
- HS - Household Shelter

\* - Mirror Image

The balcony shall not be enclosed. Only approved balcony screens are to be used. For illustration of the approved balcony screen, please refer to diagram annexed hereto as "Annexure A". All plans are subjected to amendments as may be approved by the relevant authorities. Floor areas are approximate measurements and are subjected to final survey. All RC Ledge (Reinforced Concrete Ledge) are excluded from strata area. BP Approval No. A1720-00020-2021-BP02 dated 17/03/2023

# 4 - BEDROOM

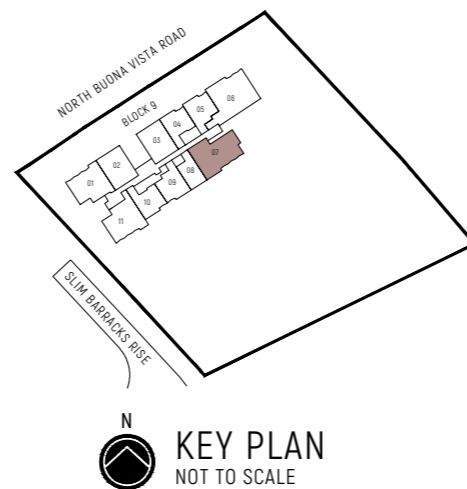
## TYPE D1

121 sq m / 1302 sq ft

BLOCK 9

UNIT

#03-07 TO #26-07



0 1 3 5M

**LEGEND (where applicable):**

- Non-Structural Wall
- Structural Wall (no hacking allowed)
- ⊠ Services Void Space (excluded from strata area)
- \* - Mirror Image
- F - Fridge
- IH - Induction Hob
- ST - Storage
- W - Washer
- GH - Gas Hob
- DB - Distribution Board
- HS - Household Shelter
- CO - Convection Oven
- WC - Water Closet

The balcony shall not be enclosed. Only approved balcony screens are to be used. For illustration of the approved balcony screen, please refer to diagram annexed hereto as "Annexure A". All plans are subjected to amendments as may be approved by the relevant authorities. Floor areas are approximate measurements and are subjected to final survey. All RC Ledge (Reinforced Concrete Ledge) are excluded from strata area. BP Approval No. A1720-00020-2021-BP02 dated 17/03/2023

# 4 - BEDROOM

## TYPE D1-PH

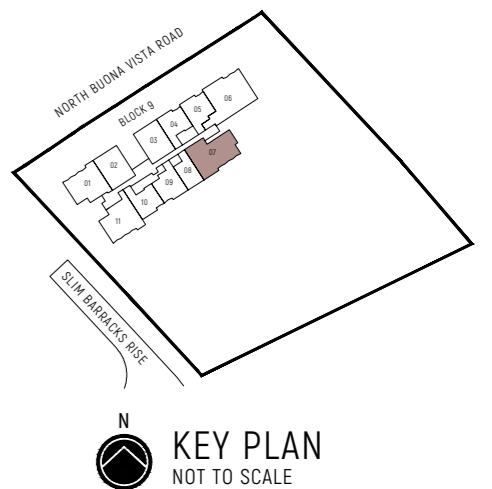
143 sq m / 1539 sq ft  
[inclusive of 22 sq m / 237 sq ft of void area (high ceiling)]

BLOCK 9

UNIT

#27-07

Dotted Line denotes Strata Void Area for Type D1-PH which is part of the Strata Void



0 1 3 5M

**LEGEND (where applicable):**

- Non-Structural Wall
- Structural Wall (no hacking allowed)
- ⊠ Services Void Space (excluded from strata area)
- \* - Mirror Image
- F - Fridge
- IH - Induction Hob
- ST - Storage
- W - Washer
- GH - Gas Hob
- DB - Distribution Board
- HS - Household Shelter
- CO - Convection Oven
- WC - Water Closet

The balcony shall not be enclosed. Only approved balcony screens are to be used. For illustration of the approved balcony screen, please refer to diagram annexed hereto as "Annexure A". All plans are subjected to amendments as may be approved by the relevant authorities. Floor areas are approximate measurements and are subjected to final survey. All RC Ledge (Reinforced Concrete Ledge) are excluded from strata area. BP Approval No. A1720-00020-2021-BP02 dated 17/03/2023

# 4 - BEDROOM PREMIUM

## TYPE D2

140 sq m / 1507 sq ft

BLOCK 9

UNIT

#03-06 TO #26-06

# 4 - BEDROOM PREMIUM

## TYPE D2-PH

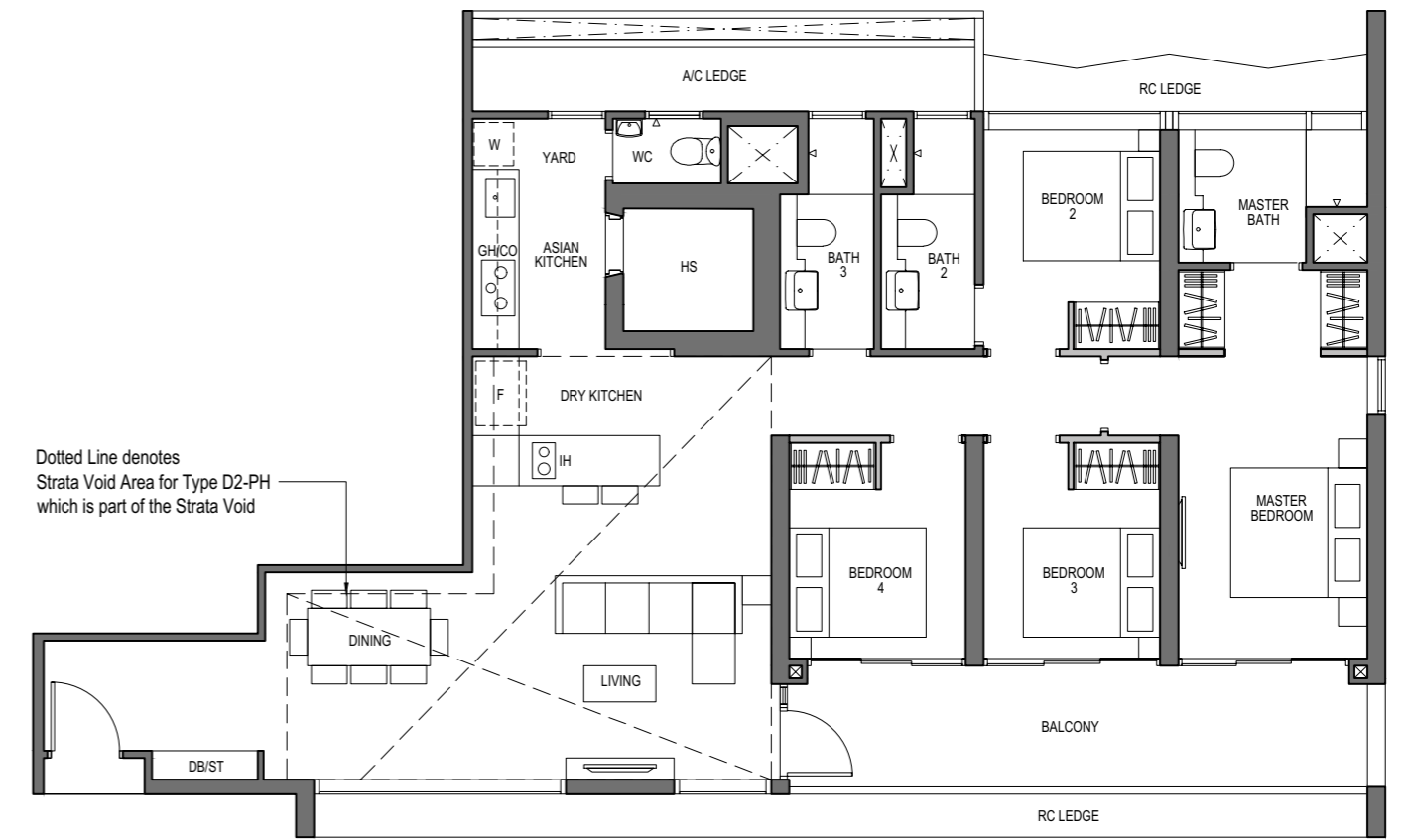
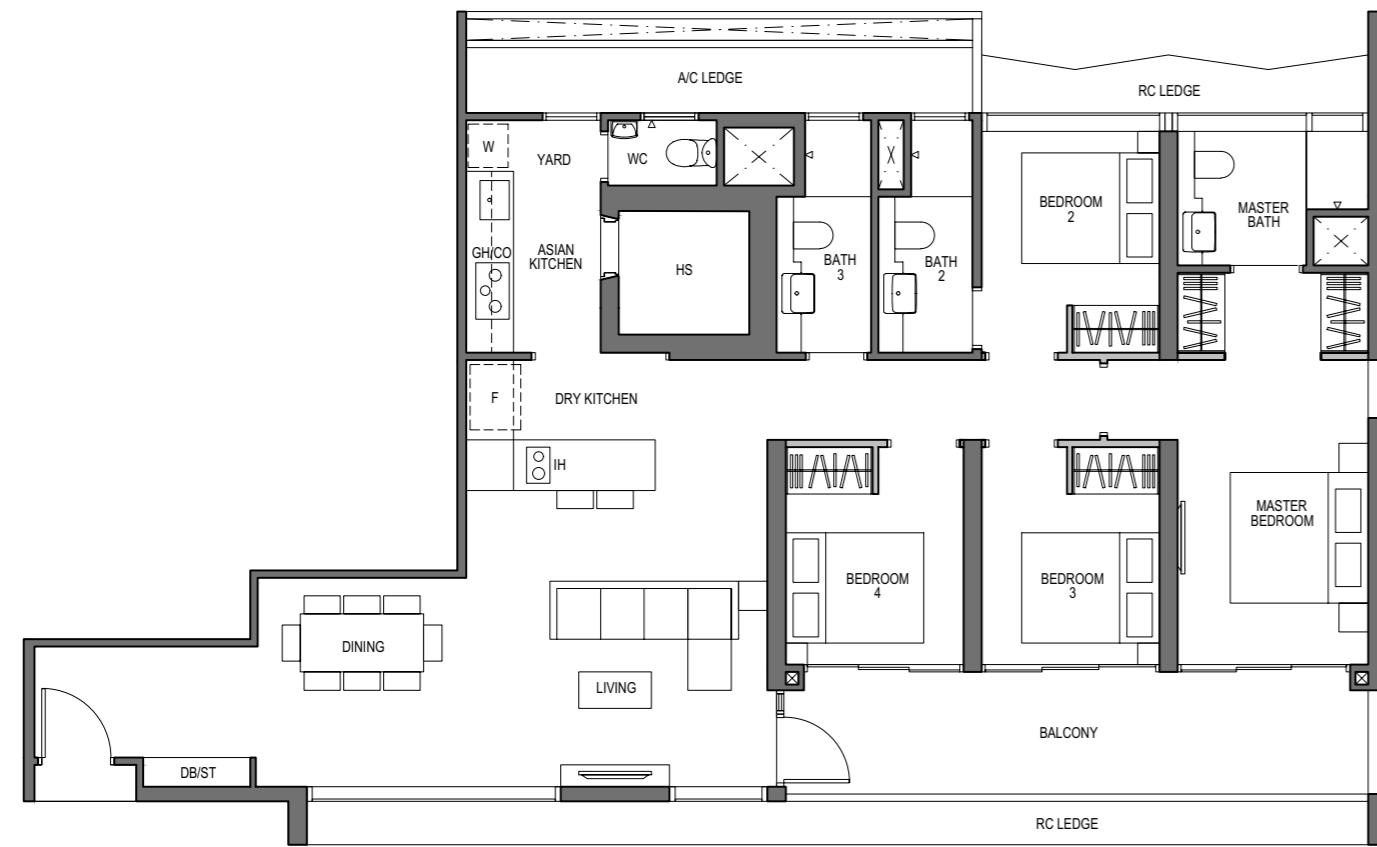
175 sq m / 1884 sq ft

[inclusive of 35 sq m / 377 sq ft of void area (high ceiling)]

BLOCK 9

UNIT

#27-06



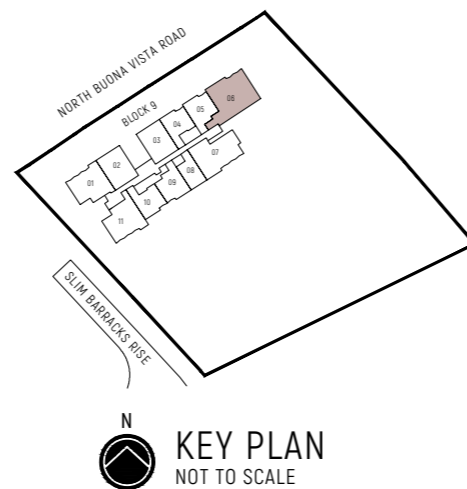
Dotted Line denotes Strata Void Area for Type D2-PH which is part of the Strata Void

0 1 3 5M

LEGEND (where applicable):

- Non-Structural Wall
- Structural Wall (no hacking allowed)
- Services Void Space (excluded from strata area)
- F - Fridge
- IH - Induction Hob
- ST - Storage
- W - Washer
- GH - Gas Hob
- DB - Distribution Board
- WC - Water Closet
- HS - Household Shelter
- CO - Convection Oven

\* - Mirror Image



KEY PLAN NOT TO SCALE

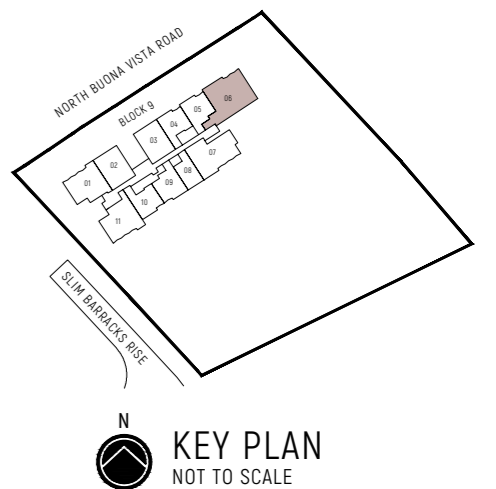
The balcony shall not be enclosed. Only approved balcony screens are to be used. For illustration of the approved balcony screen, please refer to diagram annexed hereto as "Annexure A". All plans are subjected to amendments as may be approved by the relevant authorities. Floor areas are approximate measurements and are subjected to final survey. All RC Ledge (Reinforced Concrete Ledge) are excluded from strata area. BP Approval No. A1720-00020-2021-BP02 dated 17/03/2023

0 1 3 5M

LEGEND (where applicable):

- Non-Structural Wall
- Structural Wall (no hacking allowed)
- Services Void Space (excluded from strata area)
- F - Fridge
- IH - Induction Hob
- ST - Storage
- W - Washer
- GH - Gas Hob
- DB - Distribution Board
- WC - Water Closet
- HS - Household Shelter
- CO - Convection Oven

\* - Mirror Image



KEY PLAN NOT TO SCALE

The balcony shall not be enclosed. Only approved balcony screens are to be used. For illustration of the approved balcony screen, please refer to diagram annexed hereto as "Annexure A". All plans are subjected to amendments as may be approved by the relevant authorities. Floor areas are approximate measurements and are subjected to final survey. All RC Ledge (Reinforced Concrete Ledge) are excluded from strata area. BP Approval No. A1720-00020-2021-BP02 dated 17/03/2023